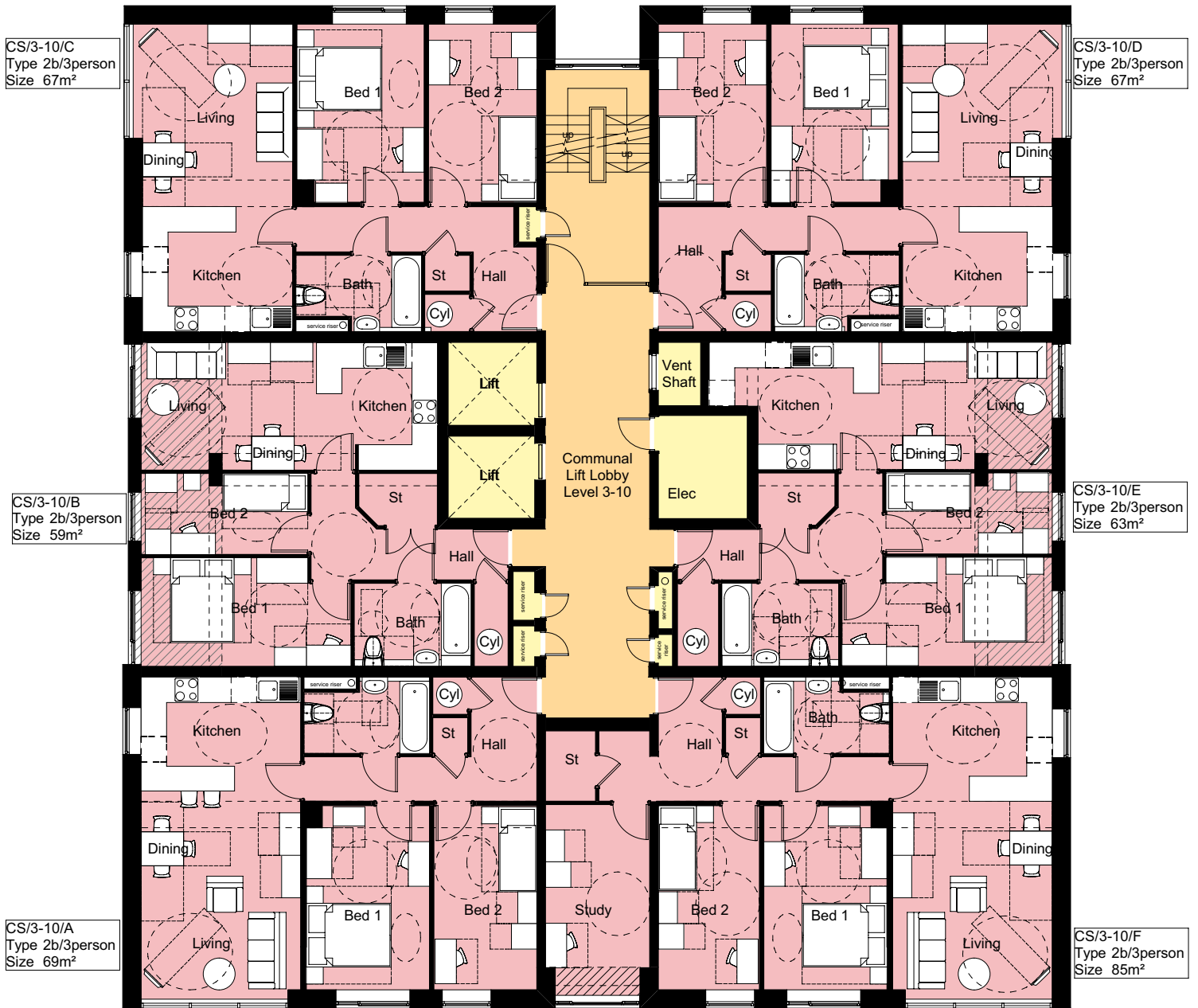


General Notes :

Do not scale off this drawing. Do not rely on this drawing for purposes other than that stated in the title block Status.
 Read this drawing with all other project related architects drawn and specified information including risk assessments.
 Constructors must be familiar with the client's building asbestos register ahead of facilitating any site work contained on this drawing.

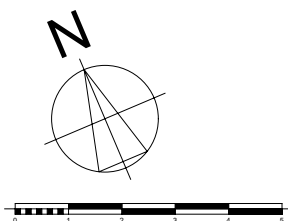


CHESTNUT HOUSE/ SALISBURY HOUSE
 6 No. 2 Bed 3 Person Apartments

FLOOR LEVEL 3 TO 10
 Total Units 48x2 = 96

Key

- 3 Bed 5 Person New Apartments
- 2 Bed 3 Person Refurbished Apartments
- Communal Areas
- Extensions to existing footprint
- 2 Bed 3 Person New Apartments
- 2 Bed 3 Person Wheelchair Accessible Refurbished Apartments
- Service Area



Halsall Lloyd Partnership
ARCHITECTS & DESIGNERS

Liverpool 0151 708 8944 Nottingham 0115 978 5511 Newcastle 0191 495 0055 Leominster 01568 610 168 Preston 01772 719 996

Revisions

| | | | | | | | | | |
|--|--|---|--|----------------------|--|---------------------------|--|---------|--|
| Client One Vision Housing / Kier | | Dwg. Title Level 3 to 10 Floor Plan | | | | Dwn. MRC | | Chk. DR | |
| Job. Greenfields - Marsh lane Tower blocks | | Dwg. Status PLANNING | | | | Date April .09 | | | |
| Job No. 2121 | | Dwg No. P020 | | Rev. 1:100 | | Scale @A3 1:100 | | | |
| This drawing is protected by the copyright of the Halsall Lloyd Partnership Architects & Designers | | | | | | | | | |

www.hlpdesign.com